

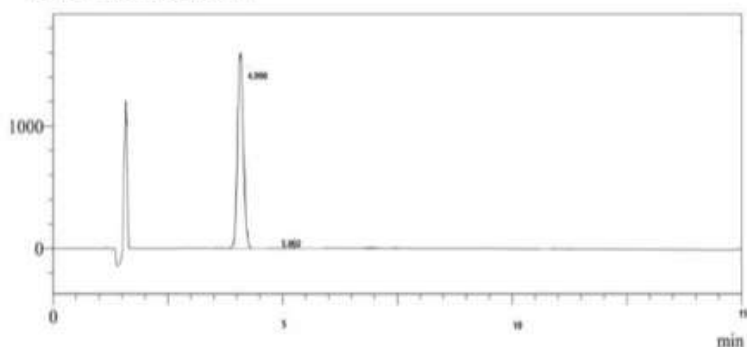


## CERTIFICATE OF ANALYSIS

### SAMPLE INFORMATION

Product Name	T 20 mg
Client Name/Lot No.	Enzymic Chemical Supply
Sequence	Tyr-{Aib}-Glu-Gly-Thr-Phe-Thr-Ser-Asp-Tyr-Ser-Ile-{Aib}-Leu-Asp-Lys-Ile-Ala-Gln-{diacid-C20-gamma-Glu-(AEEA)2-Lys}-Ala-Phe-Val-Gln-Trp-Leu-Ile-Ala-Gly-Gly-Pro-Ser-Ser-Gly-Ala-Pro-Pro-Pro-Ser-NH2
Dissolution condition	100% H2O
Length	39AA
Molecular Weight	4813.5 g/mol

### CHROMATOGRAM



Peak #	Ret. Time	Area %
1	4.990	99.810
2	5.002	0.190

### TEST RESULTS

	Specifications	Results
Strength	20.00 mg	21.35 mg
Appearance	White to off white lyophilized powder	Conforms
Purity	≥98.0%	99.8%
pH value	6.0-8.0	7.0
Impurity	Single Impurity ≤1.0%	0.1%
	Total Impurity ≤2.0%	0.2%


### TEST PARAMETERS

Pump A	0.1% trifluoroacetic in 100% water
Pump B	0.1% trifluoroacetic in 100% acetonitrile
Total Flow	1.0ml/min
Wavelength	220nm
Analytical Column Type	Agilent ZORBAX StableBond 5µm C18 (4.6*250mm*5 µm)
Dissolution Method	100% H2O
Injection Volume	20uL

### CONCLUSION

The sample was analysed using Reverse Phase High Performance Liquid Chromatography (RP-HPLC) and determined to contain 99.8% T (21.35 mg), and the rest are impurities of minor significance.

### CERTIFIED BY:

  
Dane Fredericksen  
Analytical Chemist  
12/09/2024

**\*\*Verify the validity of test results by contacting support@foreveryoungpharmacy.com\*\***



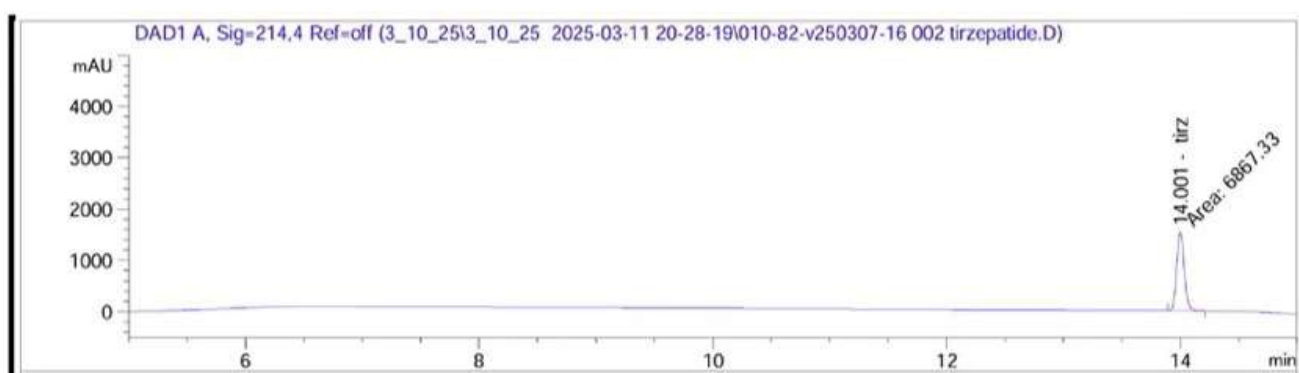
Vanguard Laboratory  
2635 Parkmont Ln  
Olympia, Wa 98502  
360-967-7010

# Certificate of Analysis

Tirzepatide 20 mg

Report To:  
Enzymic Chemical Supply  
Enzymicchemical.com

Compound: Tirzepatide  
Quantity: 20 mg  
Laboratory ID: V250307-16 002  
Lot Number: ECS-220  
Date Reported: 3/14/2025



Analysis	Method	Result
Chromatographic Purity	HPLC-UV/VIS	>99.80% $\pm$ 0.18%
Quantity		20.04 mg

Report By: Dustin Newman, Laboratory Director on 3/14/2025

Approved By: Tori Johnson, Operations Manager on 3/14/2025



Please consult A2LA Certificate #6377.01.01 for a list of accredited tests. Samples were received in acceptable condition. The result(s) in this report relate only to the portion of the sample(s) tested. All analyses were performed consistent with the Vanguard Laboratory Quality Management System. Vanguard Laboratory and its staff did not observe or participate in the sample selection process, and cannot confirm the authenticity of the sample or its representativeness of the associated lot/batch.